

Digital
Enabler
Technology

eBario Telecentre
program

The Digital Humanism Initiative

Social Justice/
Human Values

Academic
Research

Direct and Indirect
impact

Living Laboratory
Knowledge
Creation Pipelines

The eBario Story

Narayanan Kulathuramaiyer



Mar 23, 2021
5:00 – 6:30 PM
(17:00) CET

Lecture Series

“Digital Society, Social Justice and Academic Education”

Panelists: **Saa Dittoh** (UDS, Ghana), **Narayanan Kulathuramaiyer** (UNIMAS, Malaysia), **Anna Bon** (VU Amsterdam, the Netherlands)

Moderator: **Hans Akkermans** (w4ra.org, the Netherlands)

Agenda

- Background
- eBarrio Story
 - eBarrio as a project
 - Replication and expansion
 - Impact and indirect impact
- Digital Humanism, Community/Social values (Justice)/Engagement of research/Education program

SARAWAK

Land of the Hornbills

Area: 124,450 km²

Population: 2.79 million (2018)

More than 40 sub-ethnic groups, each with its own distinct language, culture and lifestyle. A magnet for researchers and nature-lovers alike, its opulent biodiversity and natural resources spell a uniqueness which cannot be found elsewhere.

Penang

Kuala Lumpur
Learning Centre

Singapore

Kota Samarahan



Mukah Research
Centre



Vision

A leading global university for a sustainable future

Mission

To enhance the social and economic impacts on the global community through the pursuit of excellence in teaching, research and strategic engagement

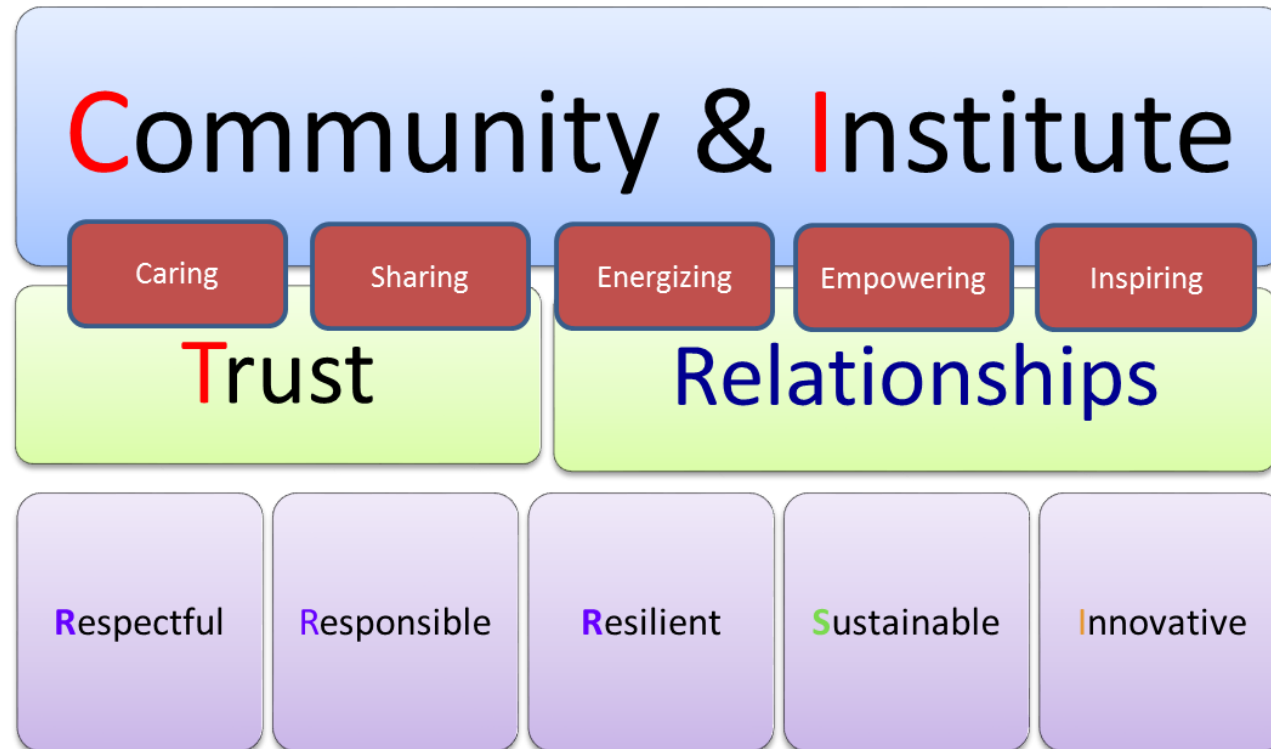


Institute of Social Informatics & Technological Innovations (ISITI)

VISION:

- An inclusive knowledge society comprised of communities inspired to innovate with technology towards sustainable development

Core Values



eBario Story

Bario



- ✦ Homeland of the Kelabit tribe.
- ✦ People are well-known for their warmth, hospitality and friendliness.



The Kelabits of Bario

- ✦ ~1,000 tribal Kelabits remaining in Bario
- ✦ 12 villages (longhouses)
- ✦ religious community
- ✦ no telephone service
- ✦ Gravity-fed water
- ✦ electricity by generators/solar



Objectives

- ✦ To define the extent to which contemporary ICT could deliver **sustainable social and economic development** to remote rural communities
- ✦ To identify further **needs and opportunities** within such communities that can be satisfied by the **innovative use** of contemporary ICT



Kelabit Highlands Bario, Sarawak Malaysia



19 Passenger Twin Otter



Pilot Project on Bridging the Digital Divide (1999)

A Research Project Implemented by
Universiti Malaysia Sarawak (UNIMAS)



Supported by
DAGS, MIMOS Bhd Malaysia, IDRC, and Telekom Malaysia





eBario Story

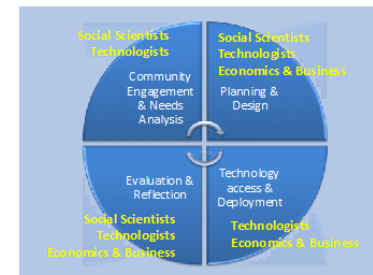
- education
- e-government services
- e-commerce
- e-health
- tele-medicine
- personal communication



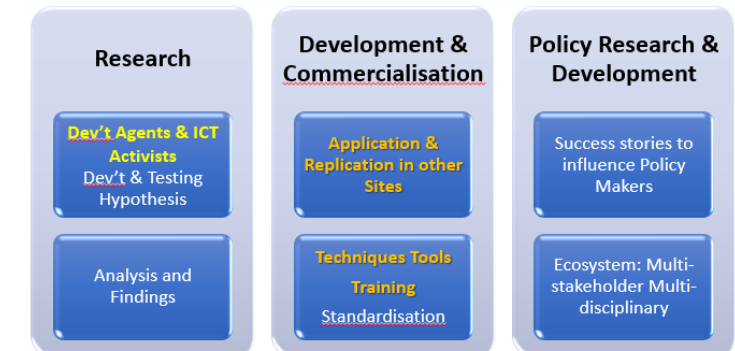
Gatuman eBario Telecentre



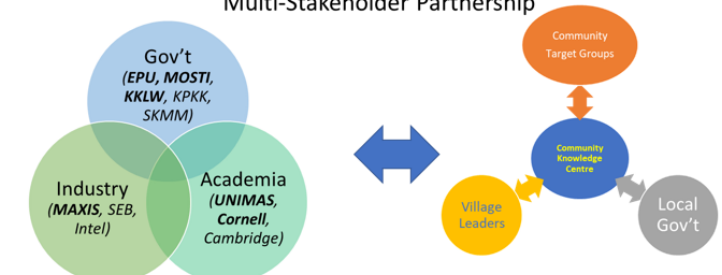
Innovation for Impact



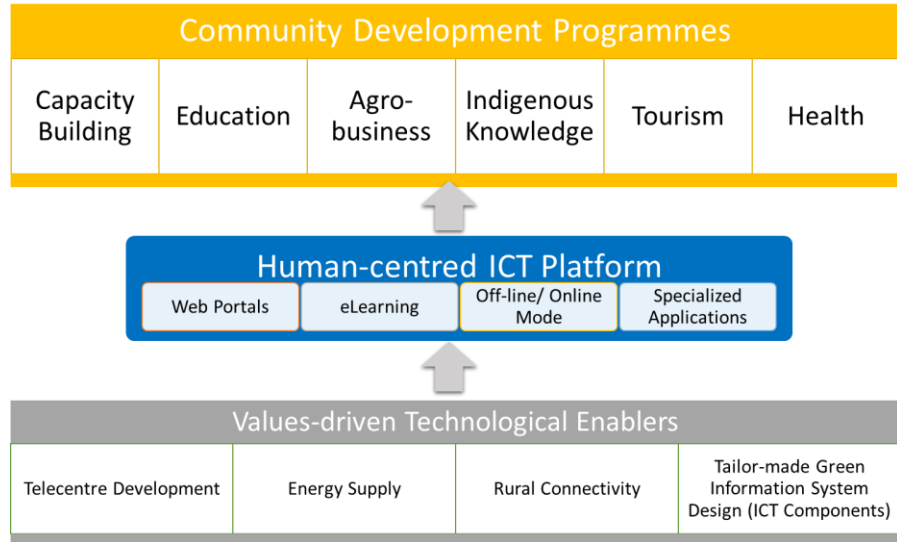
People-Centered Approach



Multi-Stakeholder Partnership



Research & Innovation Pathway



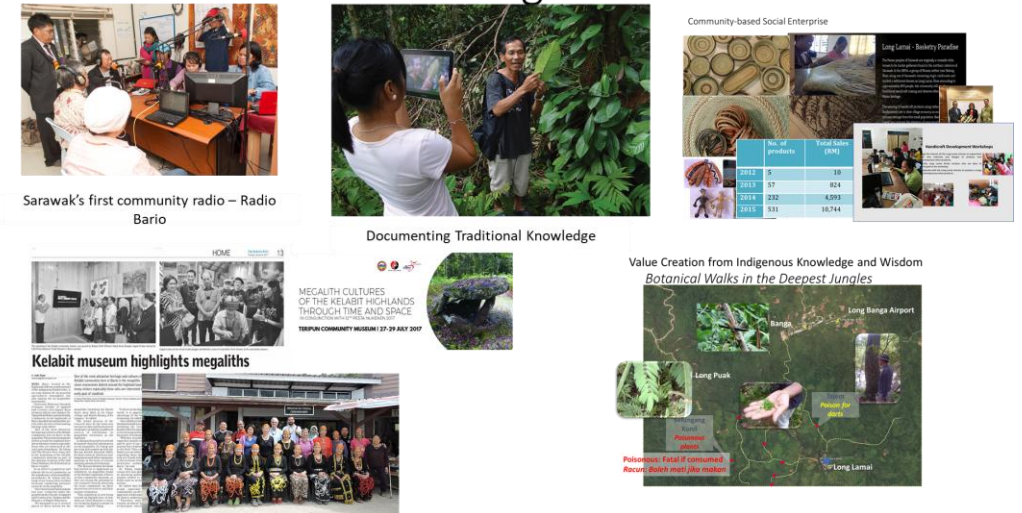
Research in Action



Balanced Partnership Model



Human Centred Technologies



Living Labs Making an impact on Communities



Improved standard of living

- Access to information to made it possible for communities who were left out to now make better informed decision.
- Access to better and more efficient communication technologies has even in certain areas saved lives
- Better access to markets and a chance for local products to bring direct benefits through the exposure to the outside world
- Community telecentres have become knowledge Centres for adoption of new skills, innovate and apply new ideas to meet local needs.
- Training of local capacities and harnessing of local assets for community wellbeing



From Local Champions to Globally acknowledged Community Scholars



John Tarawe, an international consultant presenting at an International Forum



Ba'Kelalan telecentre manager wins Broadband Empowered Entrepreneur (BEE) Award at KL Converge



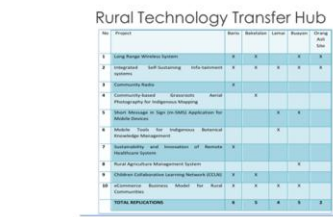
Research Facilitation by Garen Jengah



Stanley Isaac in Global telecentre award ceremony in Madrid

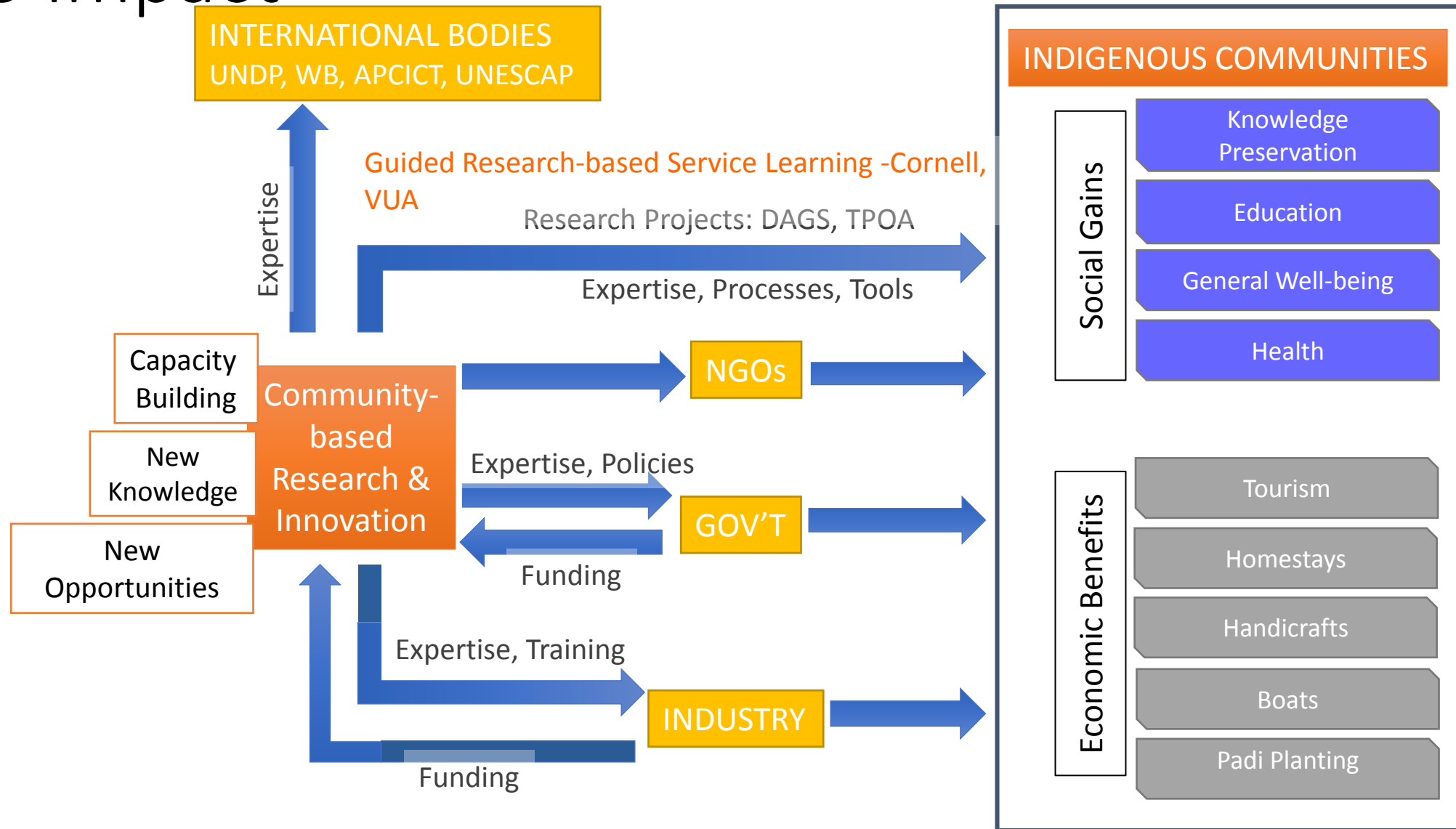


Stephen Baya

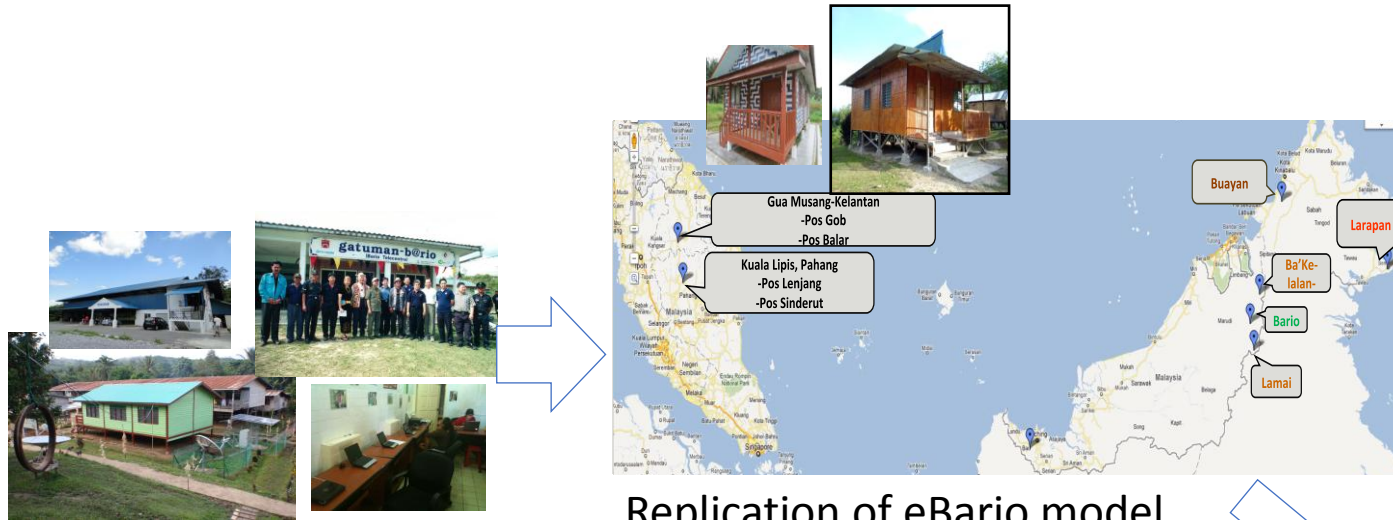


Source: www.panda.org

Pathways of ICT4D Research and Innovation to Impact



Living Labs

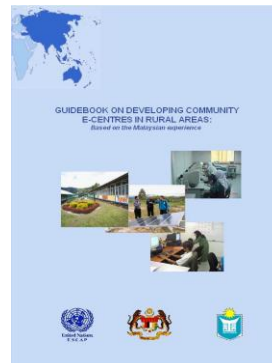


Initial exploration into Telecentres as a basis for socio-economic transformation

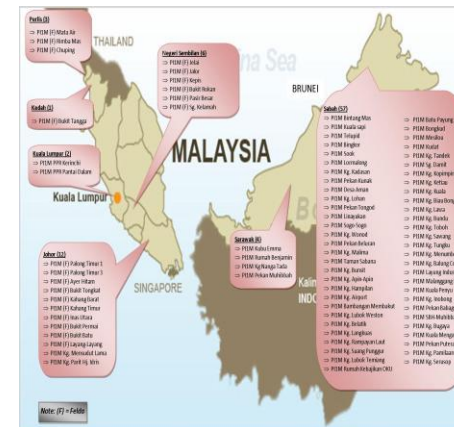
Replication of eBario model to 9 sites across the country



What Next?



UNIMAS researchers produced the UNESCAP Guidebook On Developing Community E-Centres in Rural Areas



Government adopts our model as Community learning centres

Establish leadership in Values-Based Education & Life-Long Learning



Values-based
Future Learning

SULAM Program

Translational Research



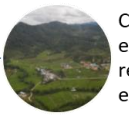
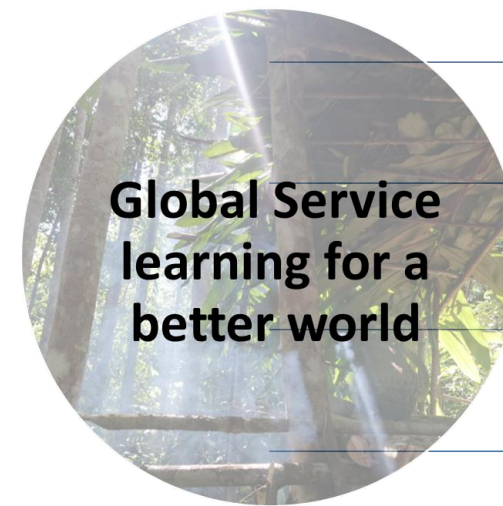
Sustainable Development



Cornell University
Department of Natural Resources



Cornell University
Public Service Center



Combine classroom
experience with
real world
experience



Community
and university
become a
collective



Mutual Learning
where everyone
is teaching and
learning



Cross
cultural
learning

Adapted from: Principles of Good Practice in Combining Service and Learning. Porter-Honnet and Poulsen, 1990.

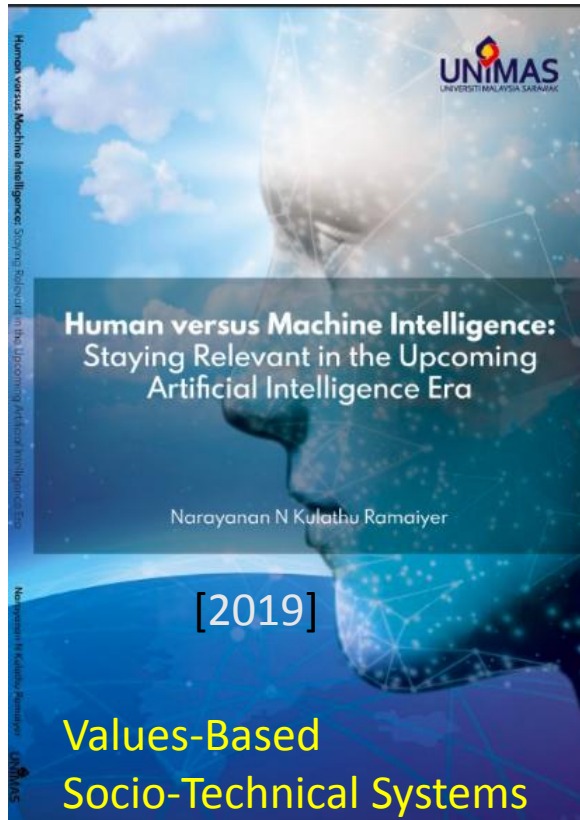
Partnerships for Community Resilience



Source: Jengan,G., George, F., Alread,S., Somchanhmavong, A.K., Kulathuramaiyer, N.
eBorneo Knowledge Fair, 2019

[illegible]

Thank You



<https://www.isiti.unimas.my/>

<https://www.isiti.unimas.my/home/isiti-ebario-history>